

NAHLA

PRIMARY SCHOOL

2018 ANNUAL REPORT



Dear Friends,

I know what it's like to have to walk for hours to get to school. When my family was evicted from the home I grew up in, I struggled with continuing to attend school. I don't want any kids to have to go through that experience.

In February, 2018 we opened Nahla Nursery Primary School, and now kids in my family's village can go to school in their community, without walking long distances. I'm proud that it is even better than the school I went to in Kampala. The class sizes are smaller, the teachers are high quality, textbooks and school supplies are available, and teachers show up on time.

Our Vision is to provide opportunities for kids in Northern Uganda to rise to their full potential, and bring their region out of poverty

**YOU MAKE A
DIFFERENCE**



It's incredible that we have already seen changes take place in these kids lives during our first school year. Thanks for being a part of giving them the opportunity to make their dreams come true.

- Co-founder, Etyang Fred



WE HIRED OUR STAFF

We started off the year by hiring:

1 head teacher	3 cooks
12 teachers	2 guards

One of Fred's former teachers, Mr. Willy, has experience with starting up schools, and volunteered his time to help us during the start up process. He helped us create teacher contracts and hire teachers.

All of our teaching staff have teaching certificates and come from the local area.

**We didn't even have to advertise,
the teachers came to us!**



WE TRAINED OUR TEACHERS

The key to quality education is having high quality, skilled teachers.



Before school started, we hired **Yiya** to train our teachers in interactive teaching techniques so our students will be involved in their own learning.

SMC

The community also elected members to form a **School Management Committee** to govern the school.

WE CHOSE A NAME

We decided to name the school Nahla, after a seven year old girl from New Jersey that spent a year raising \$2,000 to build a well at the school, so that kids could have access to clean water.



We hope that all the children at our school have that same giving spirit, and use their education to make a difference for others in their community.



We Held a Grand Opening Ceremony : February 2018

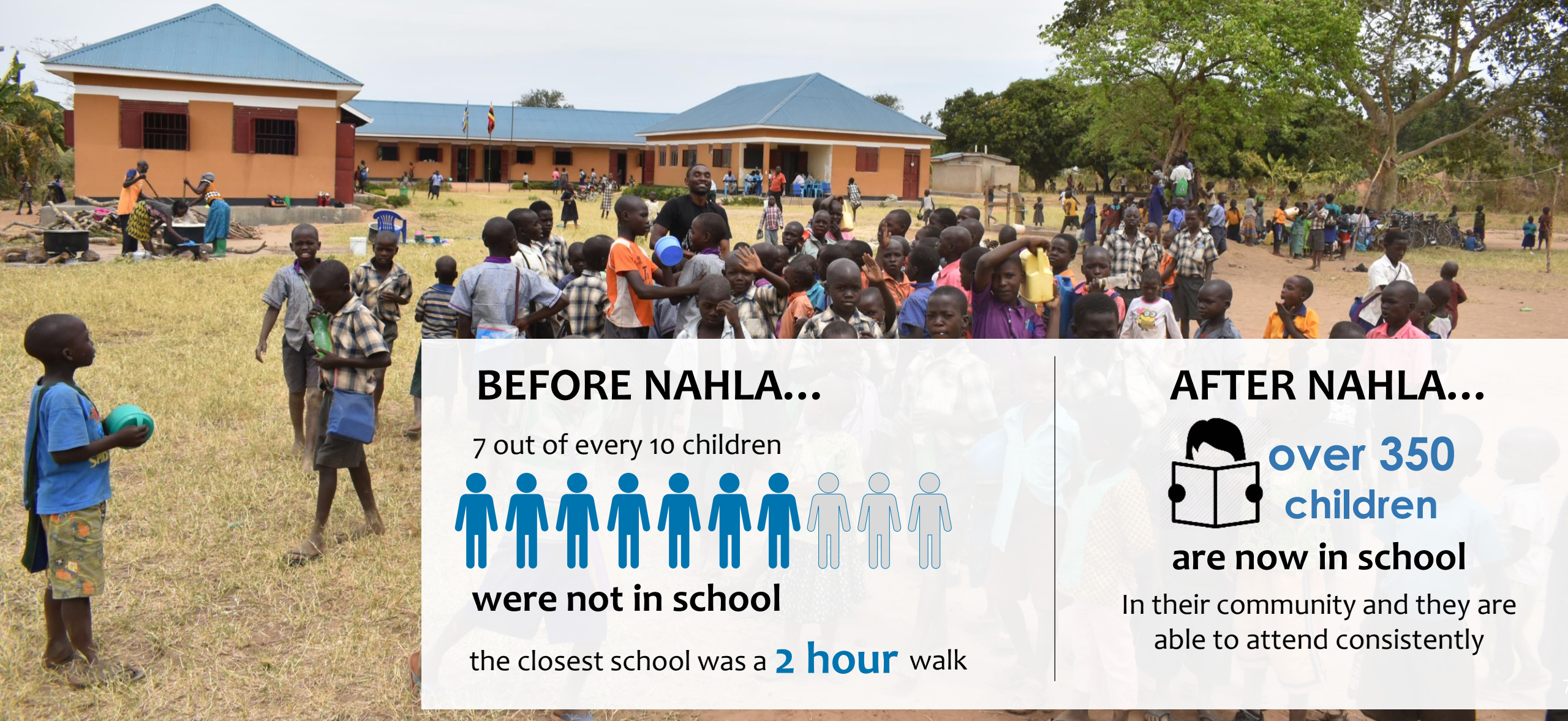
Hundreds of community members gathered together to celebrate our Grand Opening with food, speeches, traditional music and dancing. We had a ribbon cutting and a local priest blessed the school.

The first day of class began on February 5th!



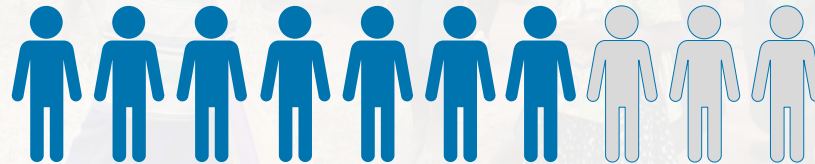
Nahla Nursery and Primary School

provided quality education to **over 350** kids in 2018



BEFORE NAHLA...

7 out of every 10 children



were not in school

the closest school was a **2 hour** walk

AFTER NAHLA...



over 350
children

are now in school

In their community and they are
able to attend consistently

**We are already
seeing an impact!**

BEFORE

Students were shy when you asked them about their dreams for the future.

They weren't very talkative, and had trouble sharing any career dreams..

AFTER ONE YEAR AT NAHLA

Students now confidently say that **they have dreams for their future careers!** They want to be lawyers, doctors, and engineers.

Parents say that their kids now **speak better English** at home.

Students have gained confidence through interacting with their peers. They participate in singing and debate events at school.



2018 EXAM ROSTER

Grade Level	Students
Primary 1	37
Primary 2	55
Primary 3	64
Primary 4	26
Primary 5	16
Primary 6	11

P4 and P7 are transition years, from lower to upper primary, and from primary to secondary.

We will have our first **P7** class in 2019.

P4 Exam Performance

88%

Of students passed their final exams (Division 1-3 scores)

P6 Exam Performance

100%

Of students passed!
91% of students scored in Division 1 or 2

MOSES OKINO

Parent and Mechanic

Moses has three children attending Nahla Nursery and Primary School. He's a very involved parent and loves to visit his kids at school.

“I want my kids to love studying, like I do.”

Moses sees the value of a good education. It's given him his career as a mechanic, which he uses to take care of his family. He hopes his kids will also study so that they can find some work to do after graduation.

BEFORE

His daughter used to walk a long way to get to school.

She wasn't performing well, and was in a class with **200 other children.**

AFTER


She's now performing well!

She's only has to walk 30 minutes to school, and is in a class of 60 students.

Moses was so excited he moved his two other kids into our nursery class.



“When my kids are at home they keep talking about school. They like school more than staying at home!”

A portrait of a young man, Sam Ogwari, looking directly at the camera. He is wearing a blue button-down shirt over a purple t-shirt and a thin gold chain. The background is a rural setting with a large tree trunk on the left, a brick wall in the distance, and a chicken on the ground to the right.

“I want to be a teacher, because its good to get information to pupils.

OGWARI SAM

Primary 5 Student

Sam is from Barlonyo. He has a younger brother and sister. When asked what he likes about Nahla, he said:

“It is a good school. Class starts very early!”

Sam's favorite teacher is his math teacher, Harriet. He likes her because math is his favorite subject and the one he is the best at.

BEFORE

After walking far to school, class would start late because teachers didn't show up on time.

They didn't speak much English in class.

AFTER

Sam only walks 30 minutes to school, and class starts on time.

They must speak English in class, which helps them improve their English skills.

2018 Impact

- 1 Primary school operated in the village, and kids were able to attend school close to home
- 1 Community had access to water at the school



13 teachers

had stable employment and received trainings

Over 350 kids

received quality education in their village



Access to education can help these kids **beat the cycle of poverty, creating a different future** for themselves and their community



FINANCIALS

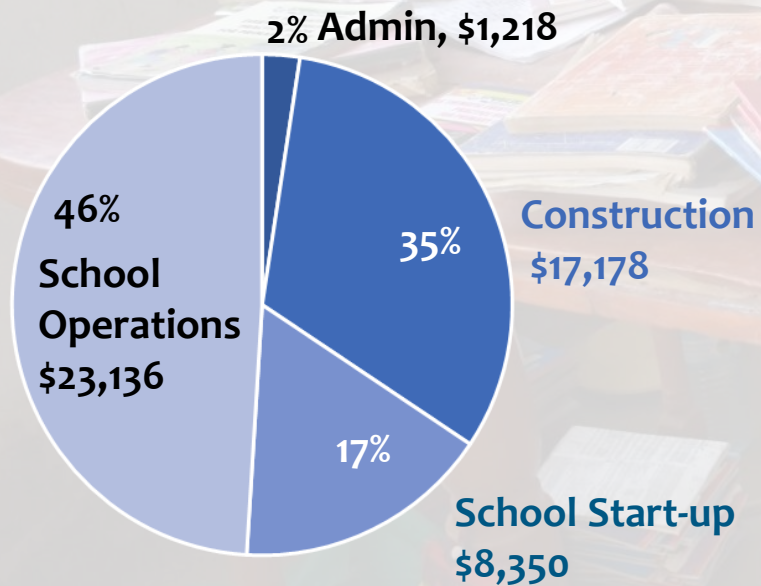
NAHLA was built in partnership with Growing Hearts of Africa Foundation

2018 Cash Assets	\$52,378
2018 Income	\$24,995
2018 Expenses	\$49,882
2018 Net Income	\$27,491*

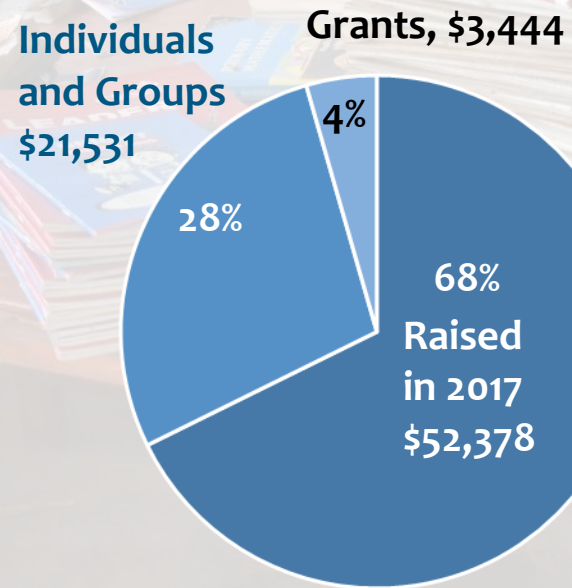
Thank you Growing Hearts of Africa Foundation, and all of the individual donors and groups that made this all possible!!



2018 EXPENSES



2018 INCOME



*Remaining net income has been raised to operate Nahla Nursery and Primary School in 2019



“

"AT NAHLA, THE PUPIL'S LEVEL OF UNDERSTANDING IS MUCH BETTER, AND TEACHERS ARE MORE COMMITTED COMPARED TO OTHER SCHOOLS."

— Nahla Head Teacher



Our Head Teacher has 43 years of teaching experience at four different schools, including four years of experience as a Head Teacher. He grew up in the same District as Nahla Nursery and Primary School.